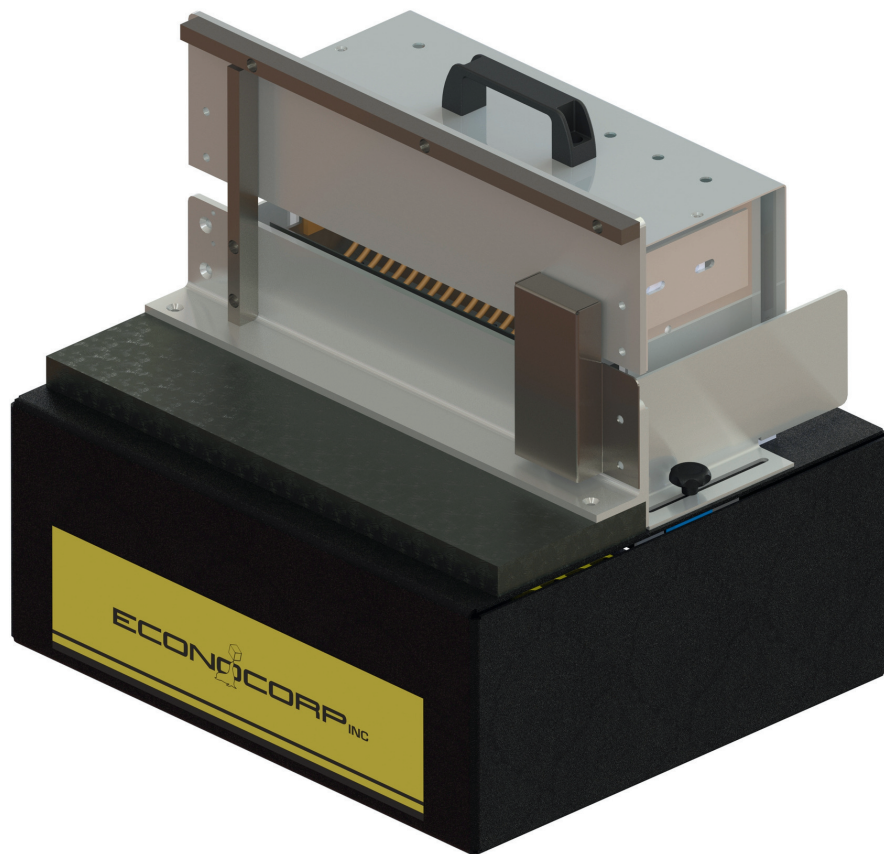


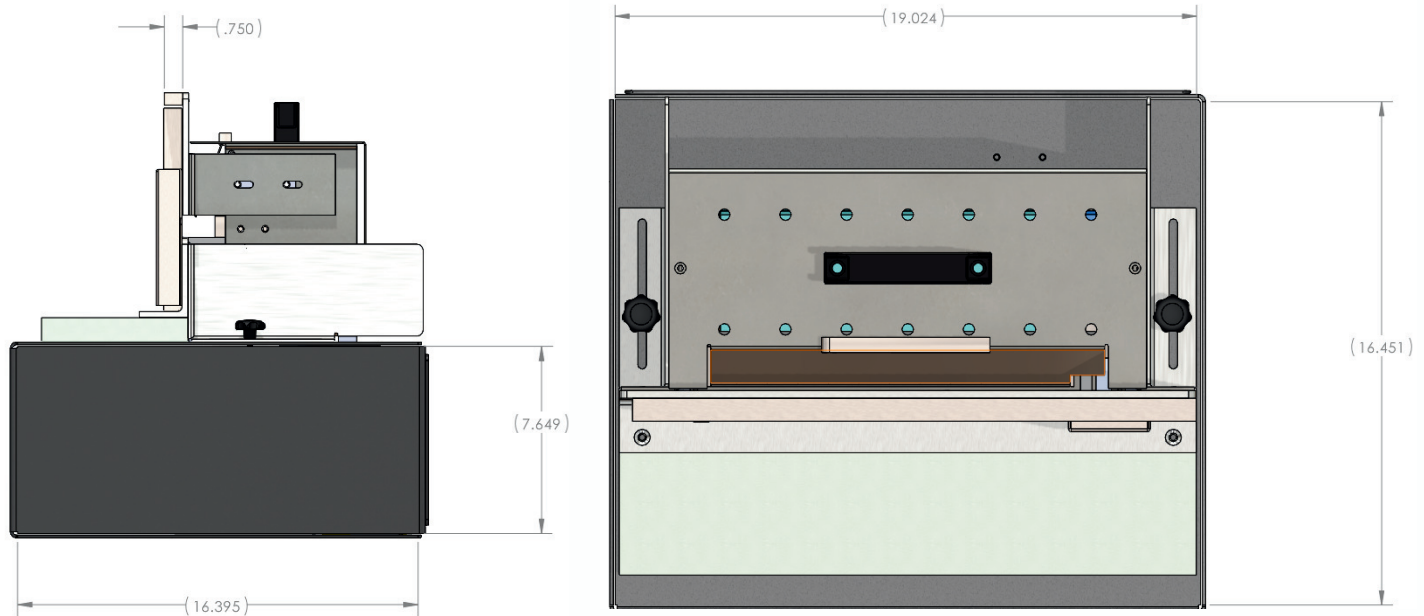
MINI MONOSEAL



MINI MONOSEAL

METHOD OF OPERATION

1. Operator presents one end of a carton in position for sealing over the glue pot
2. Activating the automatic cycle switch, hot melt glue is applied
3. Operator manually lifts the carton against the squaring device on the compression panel and hot melt glue seals the carton flaps



SPECIFICATIONS

Features

- Portable, Self Contained, Table Top Unit
- ECONOSEAL hot melt glue pot system
- Quickly adjustable for different sizes - no tooling needed
- Optional Gable Top Provision

Packing Materials

- Paperboard
- Corrugate

Speed

- Operator Dependant

Size Range

- Min: 1" x 1"
- Max: 12" x 4"

Voltage & Controls

- 115 Volts
- 220 Volts Optional 50/60 Hz, Single Phase 700 W

Air Consumption

- No Air Required

Shipping

- Less than 125 lbs (58kg)

*All Engineering Specifications and Designs are subject to change based on individual requirements